

PREISGRUPPE 3 FABRIC GROUP 3

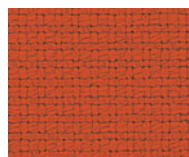
FAME

Charakter: Feine, leicht quadratische Wollstruktur
95% NZ-Wolle, 5% Polyamid
610 g/lfm Gewicht,
140 cm Breite
200000 Scheuertouren
(10 Jahre Garantie)
5 Lichtechtheit,
4-5 (trocken), 4-5 (nass)
Reibechtheit
EN 1021-1/-2 Feuersicherung

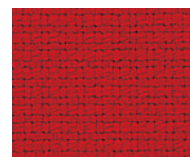
Character: Wool fabric woven with simple and discrete structure
95% NZ-wool, 5% Polyamid
610 g/lfm weight per meter,
140 cm width
200000 rubs (Martindale),
(10 years warranty)
5 light fastness,
4-5 (dry), 4-5 (wet) fastness to rubbing
EN 1021-1/-2 flammability



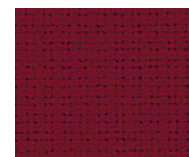
WOOLS
OF
NEW ZEALAND™



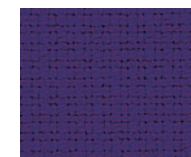
3-65 mandarin



3-60 rot



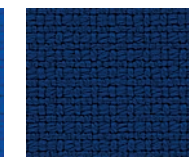
3-66 aubergine



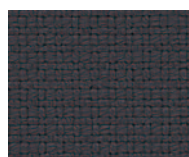
3-67 lila



3-61 blau



3-62 dunkelblau



3-63 anthrazit



3-64 schwarz

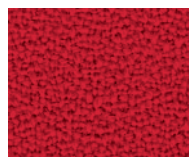
GAYA

Charakter: Feines Wollkrepp
100% Kammgarnwolle
520 g/lfm Gewicht, 140 cm Breite
50000 Scheuertouren (5 Jahre Garantie), 5 Lichtechtheit
4-5 (trocken), 4-5 (nass)
Reibechtheit
EN 1021-1/-2 Feuersicherung
DIN 4102 B2, BS 5852, NF-P-92503 M2

Character: Fine wool crepe weave
100% worsted wool
520 g/lfm weight per meter,
140 cm width
50000 rubs (Martindale),
(5 years warranty),
5 light fastness, 4-5 (dry), 4-5 (wet) fastness to rubbing
EN 1021-1/-2 flammability
DIN 4102 B2, BS 5852, NF-P-92503 M2



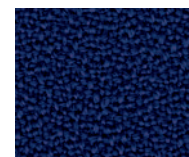
WOOLS
OF
NEW ZEALAND™



3-80 rot



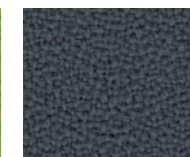
3-85 marineblau



3-87 dunkelblau



3-95 apfelgrün



3-89 grau

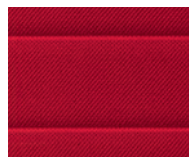


3-88 schwarz

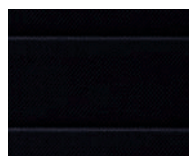
ATLANTICO WELDED

Charakter: Top moderne, leicht strukturierte Optik mit Schaumpolster PU
100% Polyester
771 g/lfm Gewicht, 138 cm Breite
110000 Scheuertouren (10 Jahre Garantie), 5 Lichtechtheit
4-5 (trocken), 4-5 (nass)
Reibechtheit
EN 1021-1/-2 Feuersicherung

Character: Exciting contemporary fabric with textured surface with foam upholstery PU
100% Polyester
771 g/lfm weights per meter,
138 cm width, 110000 rubs (Martindale), (10 years warranty),
5 light fastness
4-5 (dry), 4-5 (wet) fastness to rubbing
EN 1021-1/-2 flammability



3-41 rot

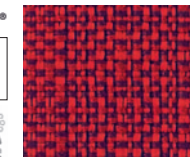


3-40 schwarz

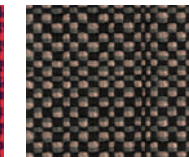
CLIMATEX

Charakter: Feine, leicht quadratische Wollstruktur
68% Cradura™, 18% zertifizierte Farmwolle, 14% Redesign Lenzing FR™
543 g/lfm Gewicht,
140 cm Breite
>100000 Scheuertouren
6 Lichtechtheit
4-5 (trocken), 4-5 (nass)
EN 1021-1/-2 Feuersicherung
BS 5852

Character: Wool fabric woven with simple and discrete structure
68% Cradura™, 18% zertifizierte Farmwolle, 14% Redesign Lenzing FR™
543 g/lfm weights per meter,
140 cm width,
>100000 rubs (Martindale),
6 light fastness
4-5 (dry), 4-5 (wet)
EN 1021-1/-2 flammability
BS 5852



3-32 rot meliert



3-33 grau meliert



3-31 schwarz/grau meliert



3-34 schwarz

nur lieferbar für Rückenpolster der Modelle R12 und R16
only available for backside series R12 and R16

ROVO STOFFE

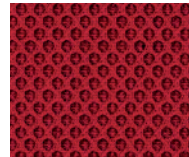
FABRICS

PREISGRUPPE 3 FABRIC GROUP 3

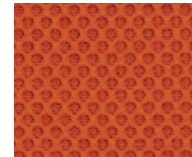
RUNNER

Charakter: Netzgewebe,
High Tech Faser, atmungsaktiv
und elastisch, 100% Polyester,
510 g/lfm Gewicht,
160 cm Breite,
70000 Scheuertouren
(10 Jahre Garantie) Martin-
dale,
5 Lichtechtheit,
4-5 Reibechtheit,
EN 1021-1/-2 Feuersicherung

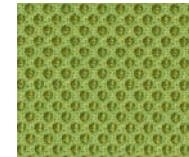
Character: Meshware
High Tech fiber, breathable
and elastic, 100% Polyester,
510 g/lfm weight per meter,
160 cm width,
70000 rubs (Martindale),
(10 years warranty),
5 light fastness,
4-5 fastness to rubbing,
EN 1021-1/-2 flammability



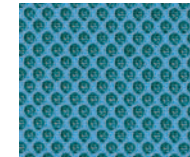
3-12 Rot



3-13 orange



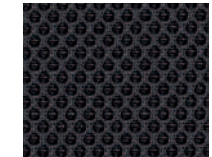
3-14 kiwi



3-15 gletscher



3-11 grau



3-17 anthrazit



3-16 weiß



3-10 schwarz