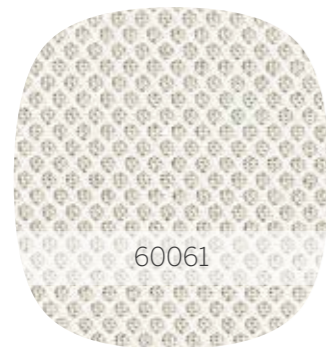
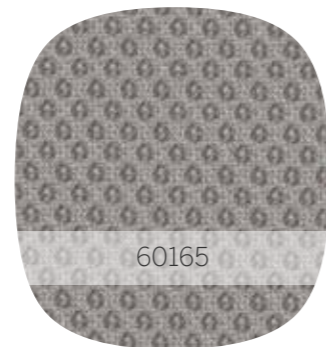


Be.
by bèta

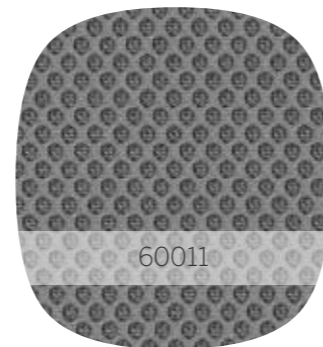
Stofkleuren —————
Runner



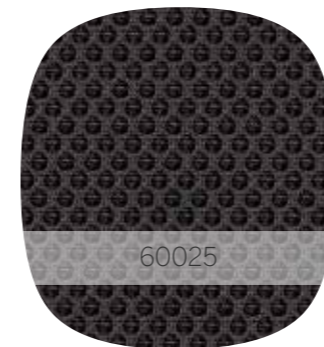
60061



60165



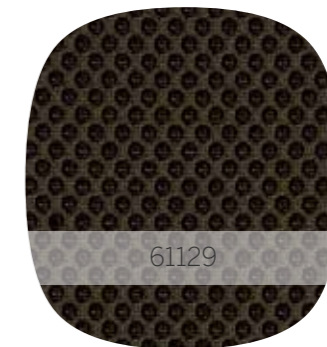
60011



60025



60999



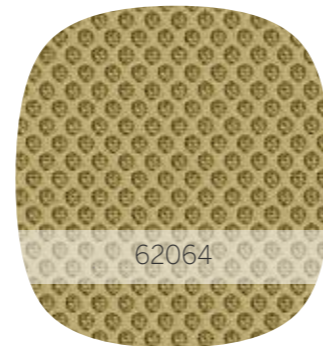
61129



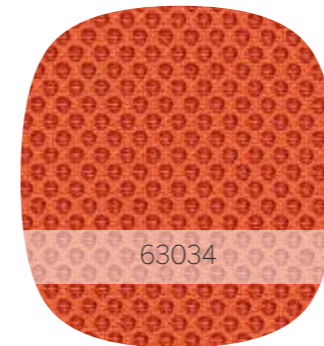
61128



61110



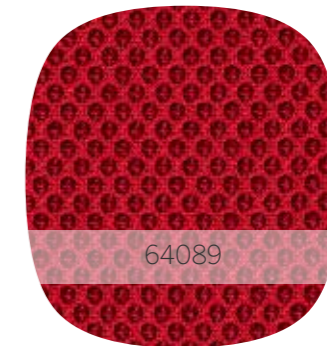
62064



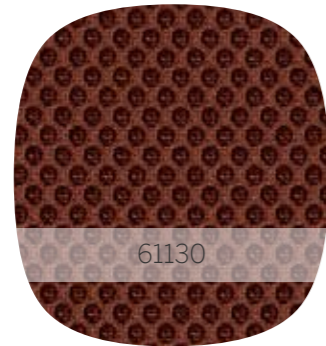
63034



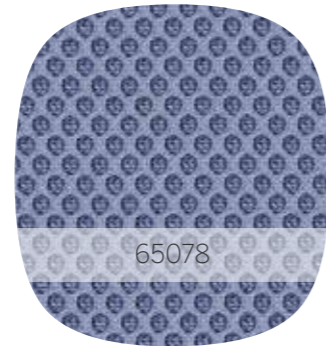
64119



64089



61130



65078



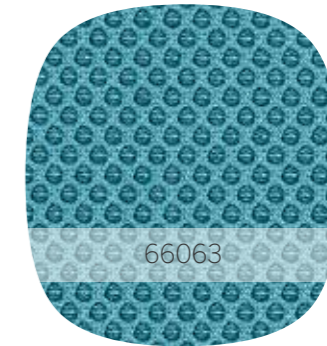
66140



66123



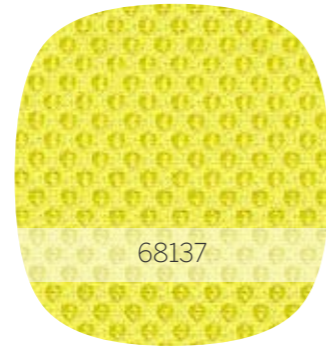
66064



66063



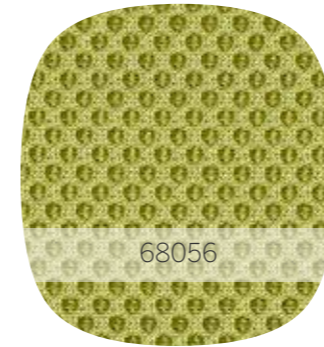
66120



68137



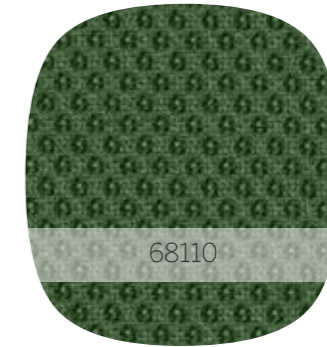
68108



68056



68109



68110

kleurafwijkingen onder voorbehoud

Runner

Kenmerken stof

- Materiaal: 100% polyester
- Gewicht: ca. 510 gr/m²
- Breedte: 160 cm
- Slijtvastheid: 70.000 toeren Martindale
- Pilling: 5
- Kleurechtheid bij licht: 5-7 (schaal 1-8, max. 8, ISO 105-B02)
- Kleurechtheid bij wrijven: nat 4-5, droog 4-5 (schaal 1-5, max. 5, ISO 105 – X12)
- Brandwerendheid: zie uitgebreide kenmerken

Uitgebreide kenmerken

Brandwerendheid:

- BS EN 1021-2 lucifertest, California Bulletin CAL 117-E-Class 1, CA TB 117-2013, BS EN 1021-1 sigarettentest, Class Uno UNI 9175 Class 1 EMME, BS EN 1021-1 sigarettentest

NB: Brandwerendheid hangt af van het gebruikte type schuimrubber