

Patina - Product information

Only by taking a deep breath and slowing down do we become aware of our surroundings and the Pattern in Nature is revealed to us. Patina is designing with nature to achieve beauty with performance. The white flecks scattered across the surface are created by the flax content, just as the flowers would appear in the fields from which it is grown. The palette takes its cues from nature and has been carefully balanced to include shades which both enhance and blend seamlessly with other fabrics in the Camira portfolio. By allowing its natural beauty to shine through, we've ensured that Patina is truly at home in its new habitat - the office.

Technical information

UK	D	F	ES
Composition 69% Wool, 22% Flax, 8% Polyamide, 1% Viscose	Zusammensetzung 69% Wolle, 22% Flachs, 8% Polyamid, 1% Viskose	Composition 69% Laine, 22% Flax, 8% Polyamide, 1% Viscose	Composición 69% Lana, 22% Lino, 8% Polyamida, 1% Viscose
Width 140cm minimum	Breite 140cm nutzbare Breite	Largeur 140cm minimum	Ancho 140cm mínimo
Weight 330g/m ² ±5% (460g/lin.m ±5%)	Gewicht 330g/m ² ±5% (460g/dfd.M ±5%)	Poids 330g/m ² ±5% (460g/m.l ±5%)	Peso 330g/m ² ±5% (460g/lin.m ±5%)
Abrasion Resistance* Heavy duty / 10 year guarantee Independently certified to ≥100,000 Martindale cycles	Scheuerfestigkeit* Schwerer Objekteinsatz / 10 Jahre Garantie Extern zertifiziert mit ≥100,000 Scheuertouren Martindale	Résistance à l'abrasion* Usage intense / garantie 10 ans. Certificat indépendant ≥100,000 cycles Martindale	Resistencia a la abrasión* Garantía de 10 años con uso intenso independientemente del certificado de ≥100,000 Ciclos Martindale
Flammability EN 1021 - 1 (cigarette) EN 1021 - 2 (match) BS 7176 Low Hazard BS 5852 Ignition Source 5 BS 7176 Medium Hazard BS 5867-2: Type B Curtains & Drapes UNI 9175 Classe 1 IM <i>Flammability performance is dependent on components used. This range has been tested using 34-38 kg/m³ CMHR foam unless otherwise stated.</i>	Feuersicherung EN 1021 - 1 (Zigarettestest) EN 1021 - 2 (Streichholztest) BS 7176 Low Hazard BS 5852 Ignition Source 5 BS 7176 Medium Hazard BS 5867-2: Type B Curtains & Drapes UNI 9175 Classe 1 IM <i>Schwerentflammbarkeit hängt vom verwendeten Schaum ab. Dieser Stoff wurde mit 34-38 kg/m³ CMHR Schaum getestet.</i>	Flammabilité EN 1021 - 1 (cigarette) EN 1021 - 2 (allumette) BS 7176 Low Hazard BS 5852 Ignition Source 5 BS 7176 Medium Hazard BS 5867-2: Type B Curtains & Drapes UNI 9175 Classe 1 IM <i>Le comportement non-feu dépend de la mousse utilisée. Cette gamme a été testé sur une mousse de 34-38 kg/m³ CMHR mousse, excepté mentionné différemment.</i>	Infiamabilidad EN 1021 - 1 (cigarillo) EN 1021 - 2 (cerilla) BS 7176 Low Hazard BS 5852 Ignition Source 5 BS 7176 Medium Hazard BS 5867-2: Type B Curtains & Drapes UNI 9175 Classe 1 IM <i>El grado de Inflamabilidad depende del tipo de foam utilizado. Esta gama ha sido testada usando foam CMHR de 34-38 kg/m³, en caso de otro tipo de foam se informará</i>
Light Fastness 5 (ISO 105 - B02)	Lichtechtheit 5 (ISO 105 - B02)	Solidité à la lumière 5 (ISO 105 - B02)	Solidez a la luz 5 (ISO 105 - B02)
Fastness to Rubbing Wet: 3, Dry: 4 (ISO 105 - X12)	Reibechtheit Nass: 3, Trocken: 4 (ISO 105 - X12)	Solidité au Frottement Mouillé: 3, Sec: 4 (ISO 105 - X12)	Solidez al rozamiento Húmedo: 3, Seco: 4 (ISO 105 - X12)
Cleaning Vacuum regularly. Professionally dry clean or wipe clean with a damp cloth.	Reinigung Regelmässig absaugen. Professionelle Trockenreinigung. Alternativ dazu mit einem feuchten Tuch abwischen.	Nettoyage Aspirer régulièrement. Nettoyage à sec professionnel. Autrement, essuyer avec un tissu humide.	Limpieza Limpiar con aspirador con regularidad. Limpiar en seco, o bien lavar con un paño húmedo.

*Abrasion testing produces a wide variability of results even from the same test sample. The independent certificate of ≥100,000 cycles is available on our website or from our customer service team. Internally we also specify this product at >100,000 cycles which we believe is realistic for repeatability of testing. Please be aware that abrasion testing alone is not a reliable indicator of the actual wear performance of fabrics. We're so confident in the durability of our products that we provide a robust 10 year guarantee (full details available).

Please note that seam performance is dependent on seam construction and needle and thread type. We recommend that appropriate sewing advice be taken.

Batch to batch variations in shade may occur within commercial tolerances. We reserve the right to alter technical specifications without notice. The Unregistered Design Rights and the Copyright in all designs are the exclusive property of Camira Fabrics Limited.

Eine optimale Nahtausreissfestigkeit hängt von der Nahtfähe, der verwendeten Nadel und dem Näh-Garn ab. Wir empfehlen daher Nähversuche durchzuführen.

Handelsübliche Farbabweichungen können auftreten und berechtigen nicht zur Reklamation. Wir behalten uns die Änderung technischer Spezifikationen vor. Die registrierten und nicht registrierten Urheberrechte der Dessinierungen sind ausschliessliches Eigentum der Camira Fabrics Limited.

Contact	
UK Head Office:	+44 (0)1924 490491
France/Belgium	+32 56 227 266
Germany:	+49 7031 60 84 30
Scandinavia:	+45 32 55 20 01
Netherlands:	+31 7361 25120
USA:	+1 616 288 0655
China:	+ 86 (0) 21 6133 1812
www.camirafabrics.com	



camira

www.camirafabrics.com

style with substance

Patina



Task seating



Soft seating



Curtains



Cigarette & Match



Medium Hazard



Year guarantee



ARS SEDENDI®

KÖHL Standard-Kollektion Patina

Sheen
Matured
Braise
Anneal
Toughened

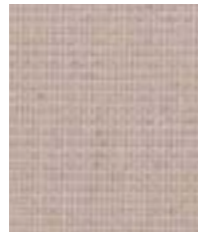
PAT17
PAT10
PAT27
PAT35
PAT20

Patina

www.camirafabrics.com



Lustre
PAT16



Aged
PAT02



Imprint
PAT39



Evolved
PAT11



Striated
PAT40



Meander
PAT21



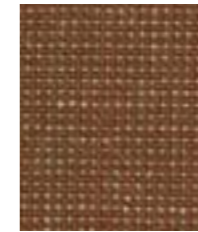
Temper
PAT28



Weathered
PAT01



Languish
PAT31



Matured
PAT10



Dusted
PAT13



Glisten
PAT25



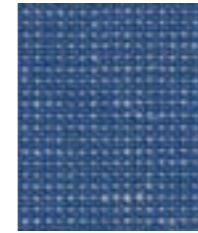
Bloomed
PAT15



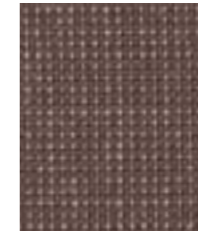
Covered
PAT14



Speckled
PAT41



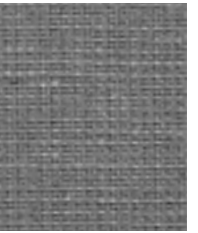
Salvaged
PAT06



Smudged
PAT30



Layered
PAT12



Veneer
PAT04



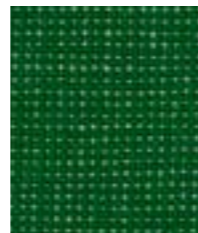
Glazed
PAT26



Irregular
PAT09



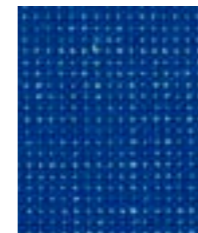
Engrave
PAT43



Flecked
PAT38



Anodised
PAT32



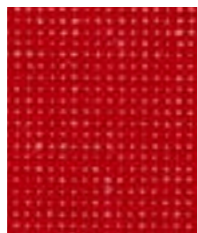
Seamless
PAT23



Stony
PAT34



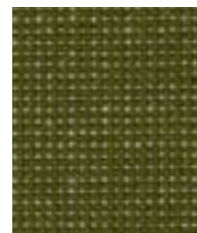
Chiselled
PAT24



Braise
PAT27



Blurred
PAT18



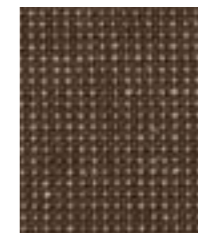
Inlay
PAT37



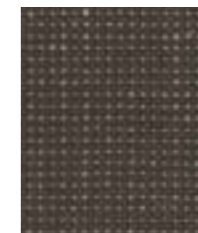
Tessellate
PAT22



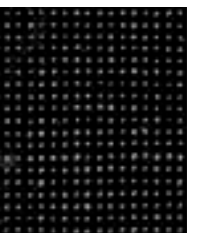
Sheen
PAT17



Timeworn
PAT08



Strata
PAT33



Anneal
PAT35



Twisted
PAT36



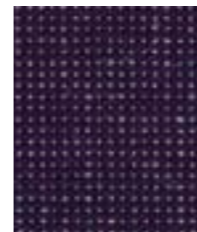
Lacquer
PAT42



Restored
PAT07



Reclaimed
PAT05



Petrology
PAT29



Rippled
PAT19



Seasoned
PAT03



Toughened
PAT20

Note

• Highlighted shades are available from stock. Other colourways are available in 10 - 15 working days.

Photographic fabric scans are not colour accurate. Always request actual fabric samples before ordering.