

PREISGRUPPE 1 FABRIC GROUP 1

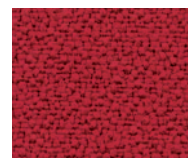
SUPERO*

Charakter: Feine Kreppoptik
100% Xtreme (Polyester)
Stretch, 400 g/lfm Gewicht
140 cm Breite
100000 Scheuertouren
(5 Jahre Garantie)
6 Lichtechtheit,
4 (trocken), 4 (nass) Reibechtheit
EN 1021-1/-2 Feuersicherung
* Supero ist als Preisgruppe 3
in diesen und weiteren Farben
in „schwer entflammbarer“
Qualität (M1/B1) lieferbar
(=Trevira CS)

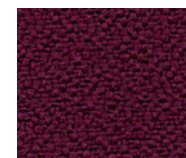
Character: Fine crepe weave
100% Xtreme (Polyester)
Stretch,
400 g/lfm weight per meter
140 cm width
100000 rubs (Martindale),
(5 years warranty)
6 light fastness
4 (dry), 4 (wet) fastness to
rubbing
EN 1021-1/-2 flammability
* Supero is available in price
group 3 in these and further
colors in low-flammability
quality (M1/B1) (=Trevira CS)



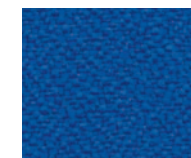
1-05 lobster



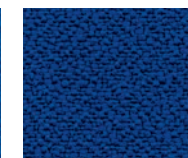
1-06 rot



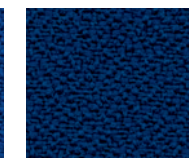
1-74 aubergine



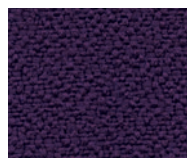
1-72 royalblau



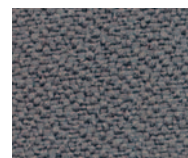
1-07 ocean



1-73 dunkelblau



1-82 violett



1-81 grau



1-75 anthrazit



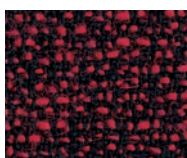
1-76 schwarz

PREISGRUPPE 4 FABRIC GROUP 4

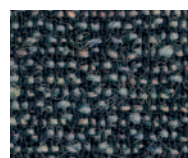
EXTREMO

Charakter: Äußerst strapazierfähiges, meliertes Krepp für 24-h Einsatz, 50% Polyamid, 33% Schurwolle, 10% Visil, 7% Viskose, 610 g/lfm Gewicht, 140 cm Breite, 500000 Scheuertouren (10 Jahre Garantie)
6 Lichtechtheit,
4 (trocken), 4 (nass) Reibechtheit
EN 1021-1/-2 Feuersicherung
BS 7176 Medium Hazard,
BS 5852schwer entflammbar

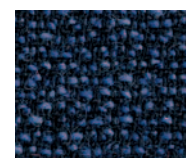
Character: Very strong crepe weave for 24-h use, 50% Polyamid, 33% virgin wool, 10% Visil, 7% Viskose, 610 g/lfm weight per meter, 140 cm width, 500000 rubs (Martindale), (10 years warranty)
6 light fastness,
4 (dry), 4 (wet) fastness to rubbing
EN 1021-1/-2 flammability
BS 7176 Medium Hazard,
BS 5852 fire retardant



4-70 rot



4-71 multi



4-72 blau



4-73 schwarz